

Path Align-R Accessory:

ODU Adaptor Plate and Waveguide to Coax Transition for Ceragon Type Radios

ODU Adaptor Connects to the antenna using the Ceragon type 4 latch bracket, replacing the radio, for direct alignment of the antennas when used with the Path Align-R.

ODU Adaptor for Ceragon Type Radios includes the following:

- One ODU Adaptor plate with Circular waveguide to coax adaptors (SMA).

Accessory and Part Numbers:

Acc 351 5999-02411 Adaptor, Ceragon ODU, 11 GHz, Waveguide to coax N.

Acc 358 5999-02418 Adaptor, Ceragon ODU, 18 GHz, Waveguide to coax SMA.

Acc 353 5999-02423 Adaptor, Ceragon ODU. 23 GHz, Waveguide to coax SMA.

Image 1: ODU Plate (ACC 358) Front Side: Circular Waveguide to Coax Adaptors (SMA)

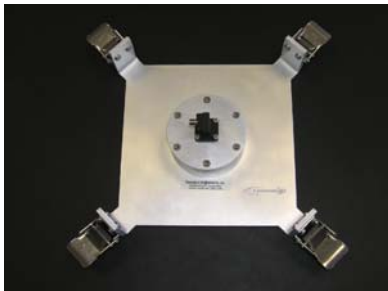


Image 2: ODU Adaptor Plate (ACC 358) Back Side; attaches to Ceragon Type Antenna Bracket

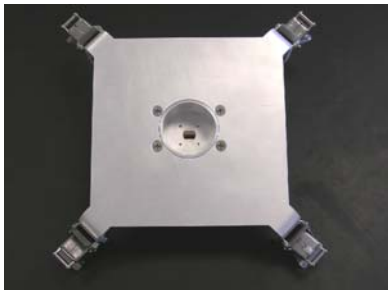


Image 3: 18 GHz Adaptor Plate (ACC 358) mounted to Ceragon Type Antenna Bracket

